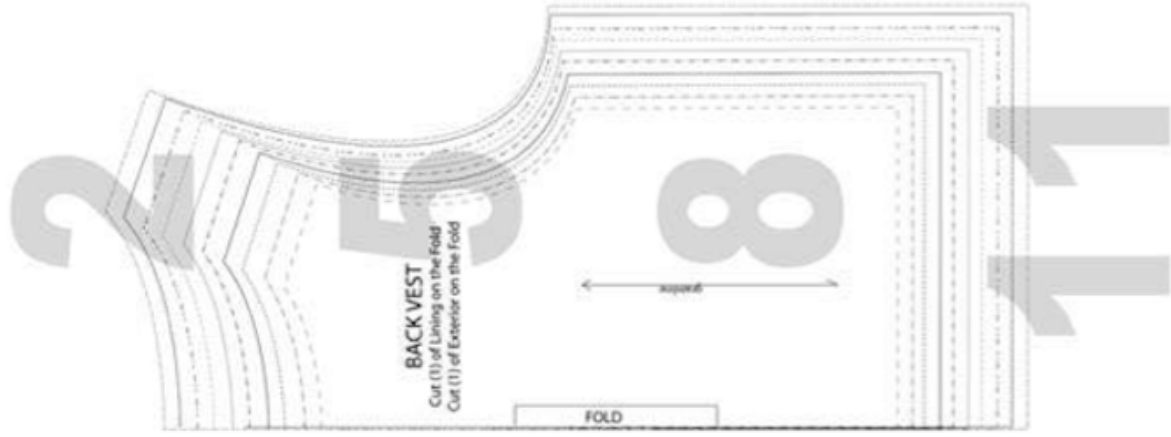
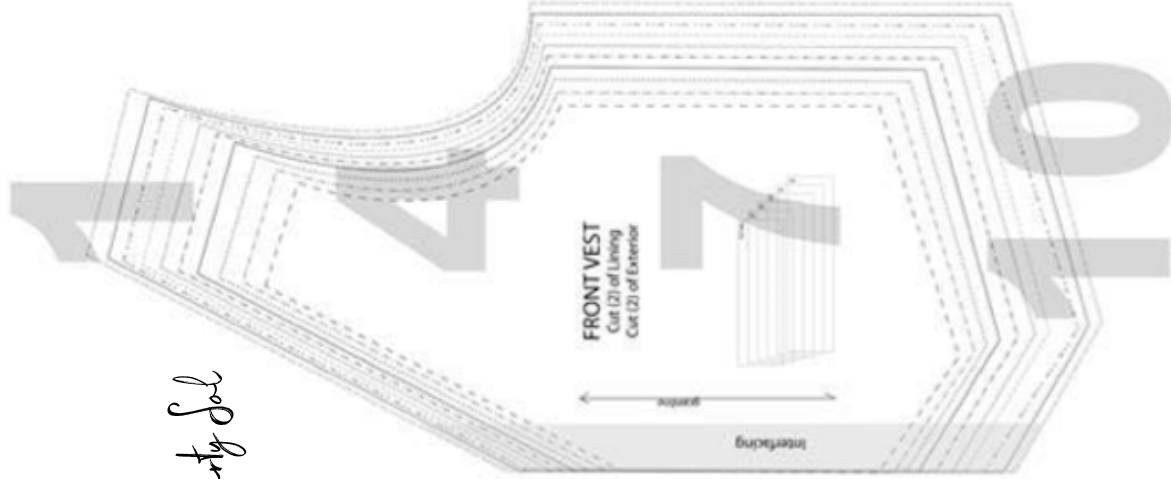


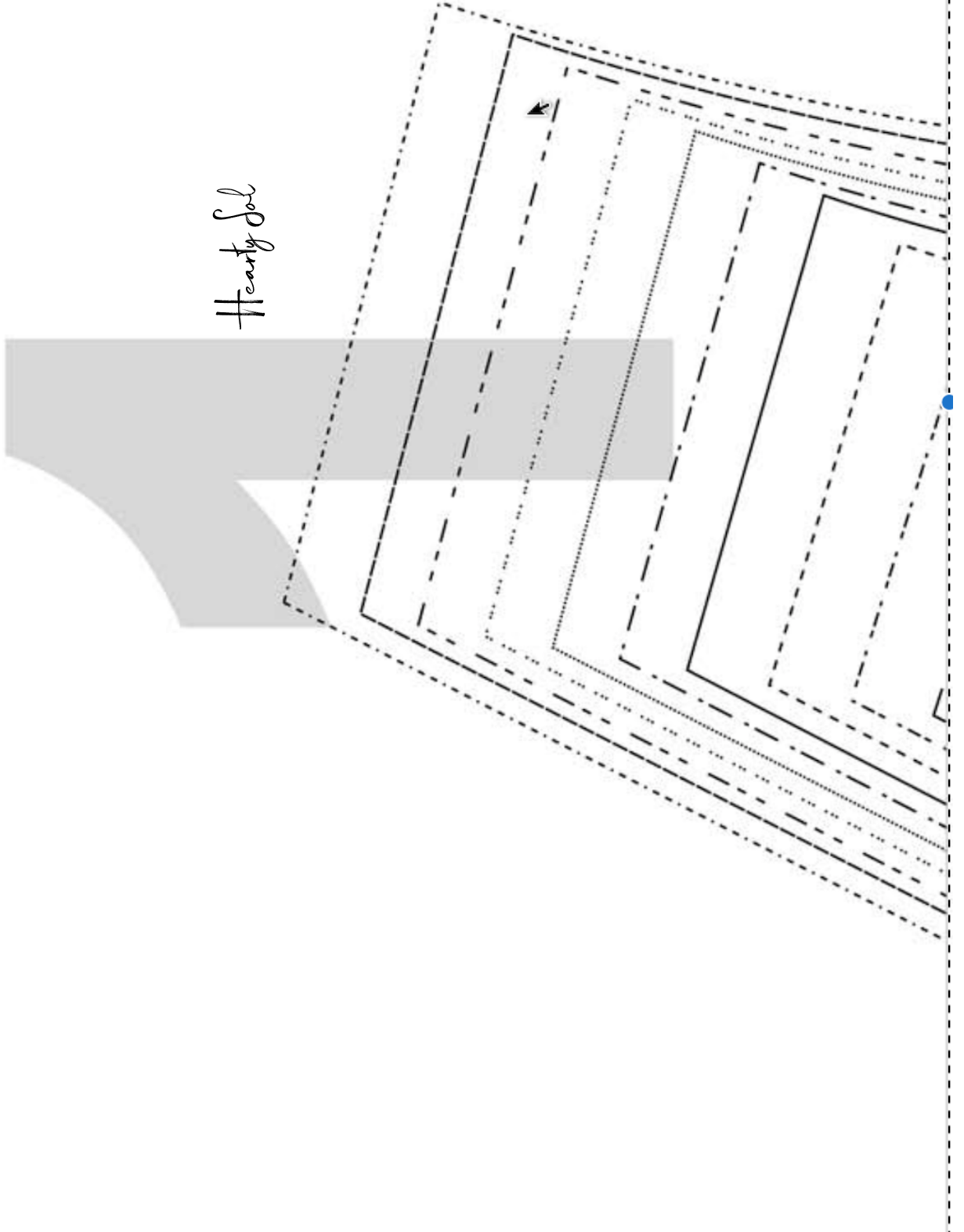
# PATTERN DIAGRAM:

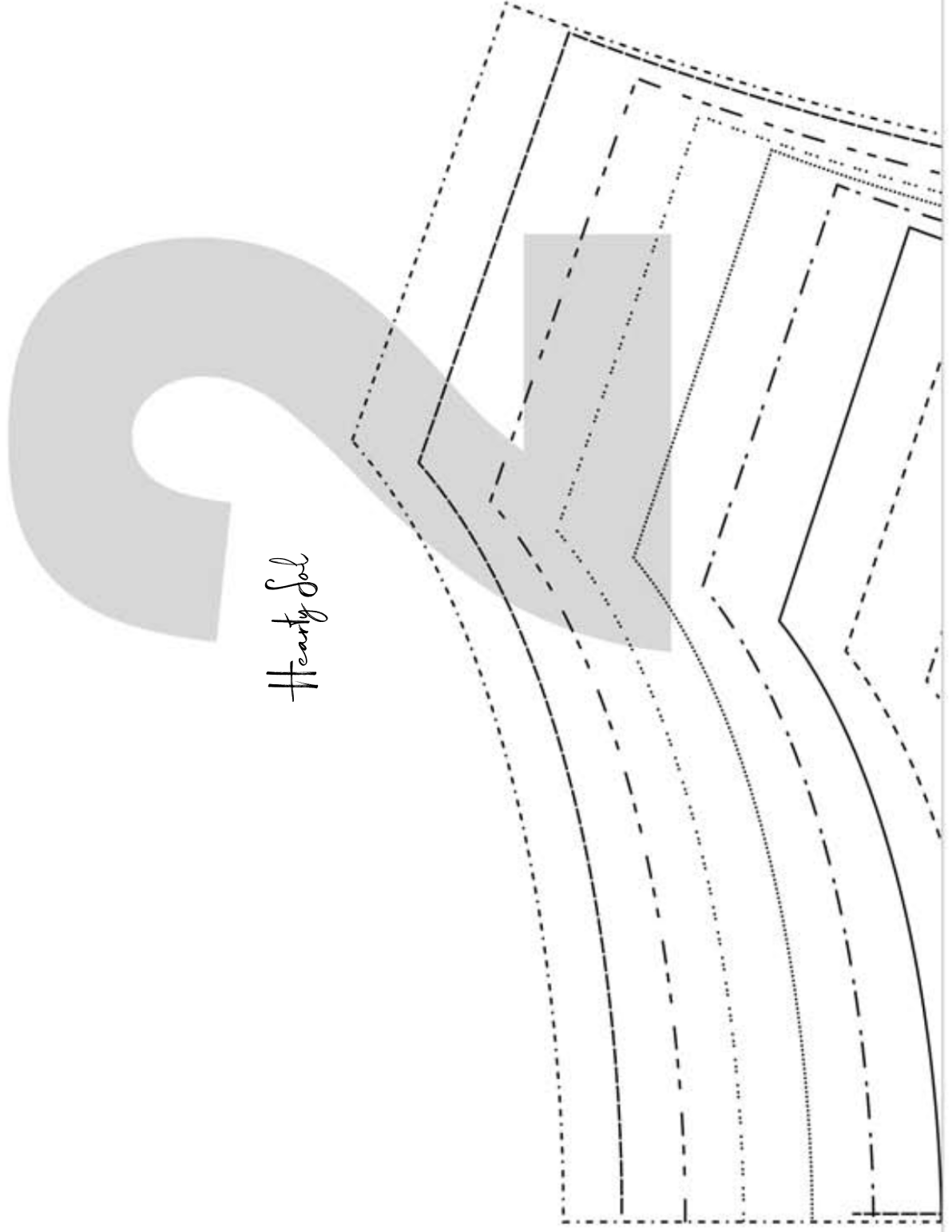
Hearty Sol

PATTERN SIZE KEY	
12 mo	2T
3T	4T
5	6
7	8
9	10



Hearty Sol





Hearty Sol

2"  
Test  
Square

## PATTERN SIZE KEY

--- 12 mo

--- 2T

--- 3T

— 4T

--- 5

--- 6

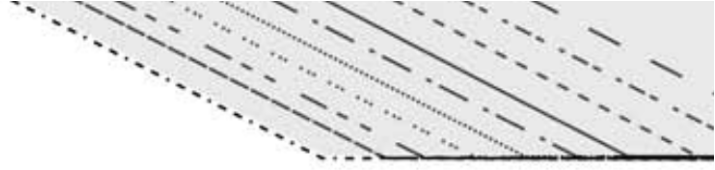
--- 7

--- 8

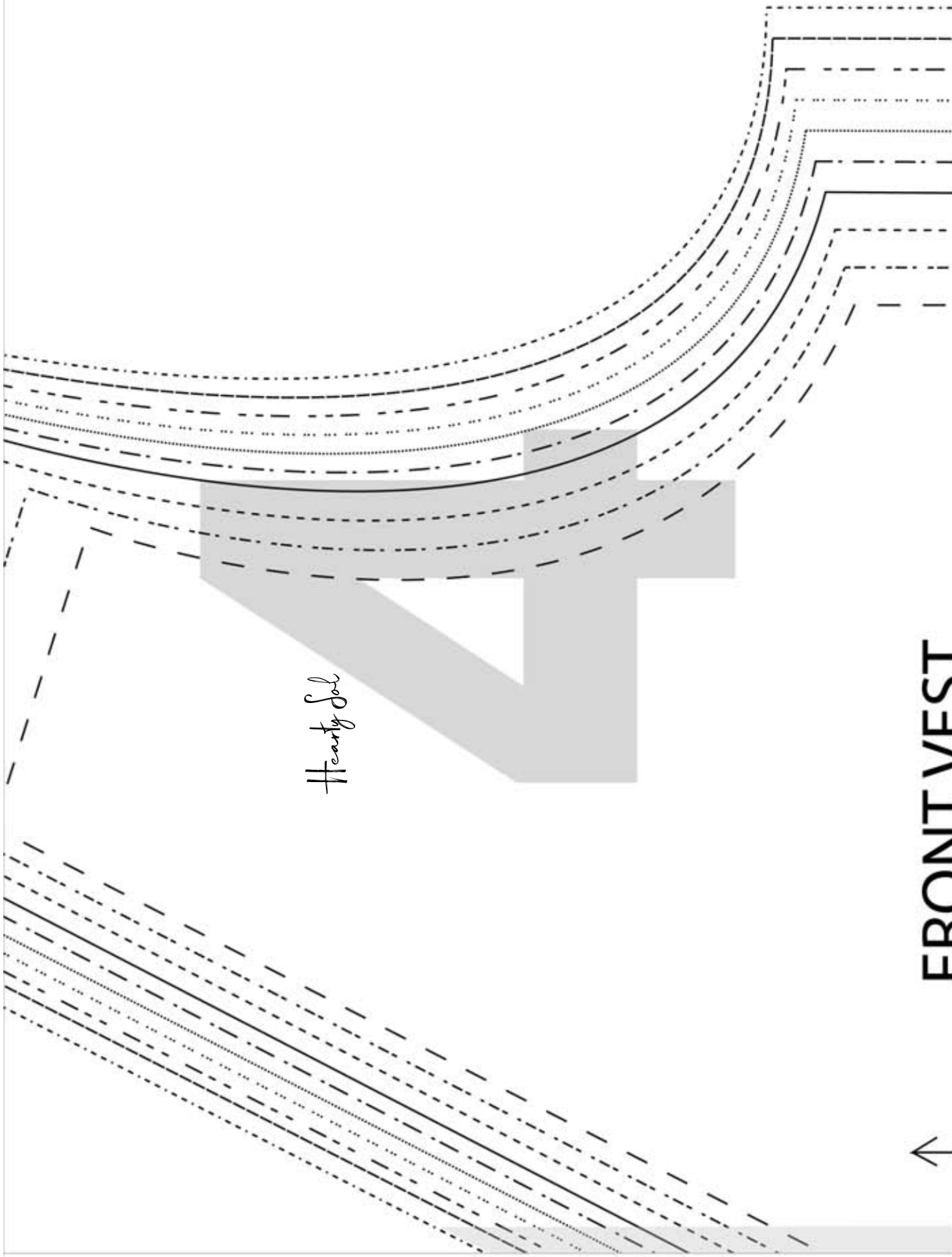
--- 9

--- 10

Hearty Sol







Hearty Sol

FRONT VEST



*Hearty Sol*

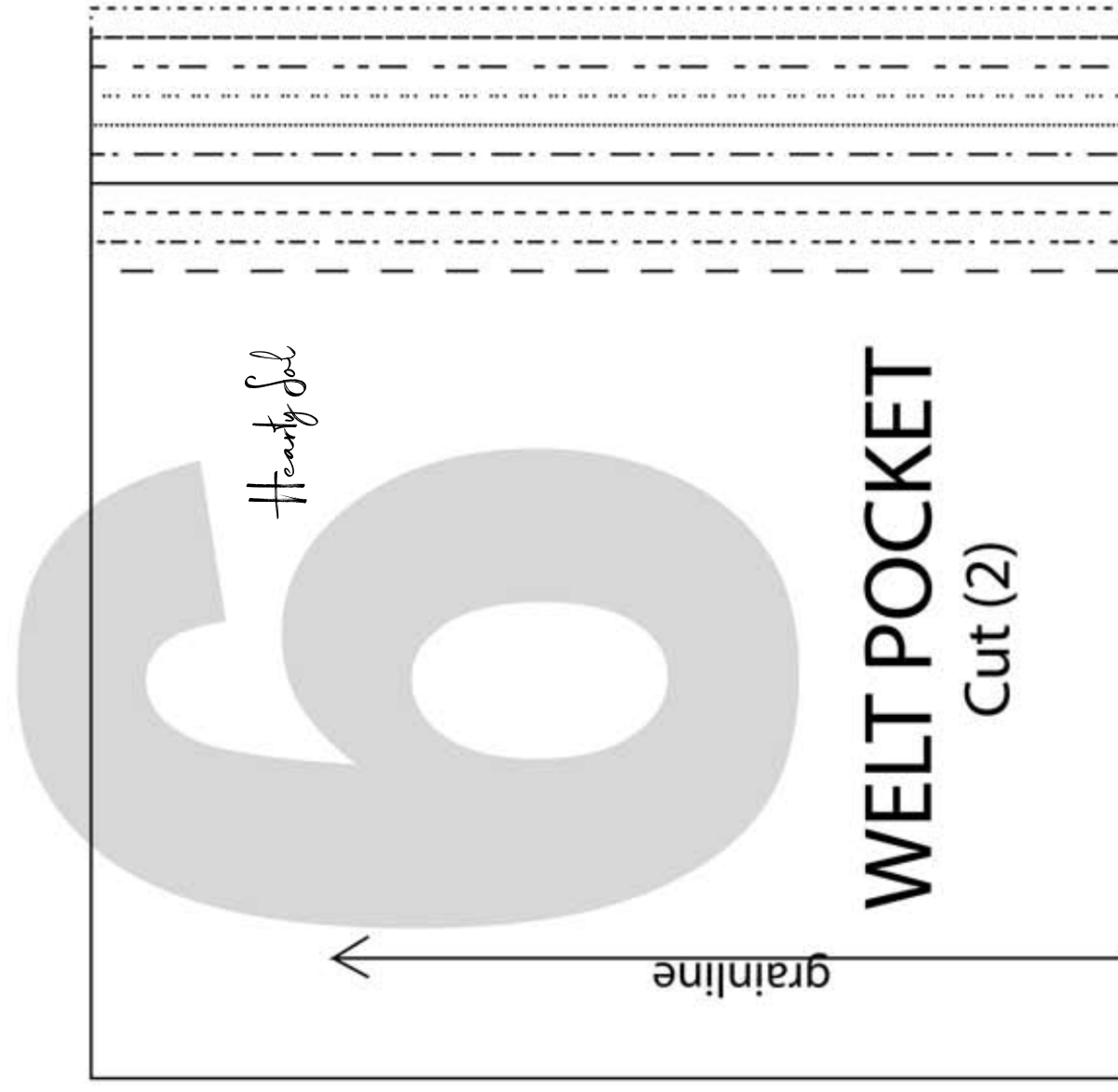
## BACK VEST

Cut (1) of Lining on the Fold

Cut (1) of Exterior on the Fold



F



Hearty Sol

WELT POCKET

Cut (2)

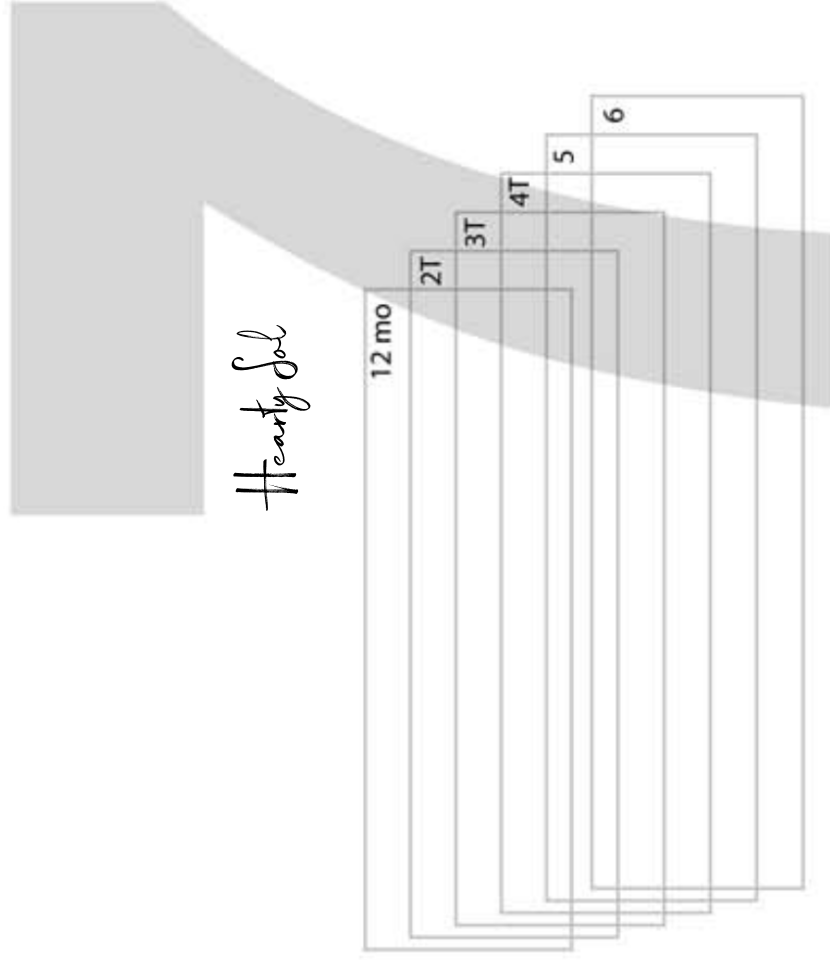
grainline

PROJECT VLSI

Cut (2) of Lining

Cut (2) of Exterior

grainline



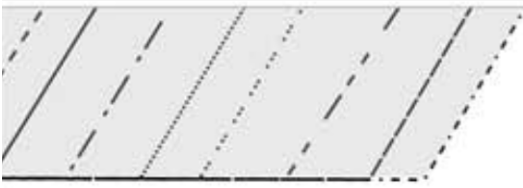
Hearty Sol

Hearty Sol



grainline

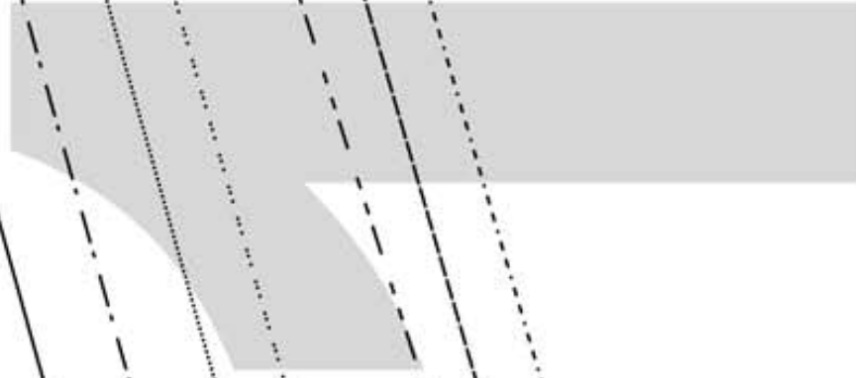
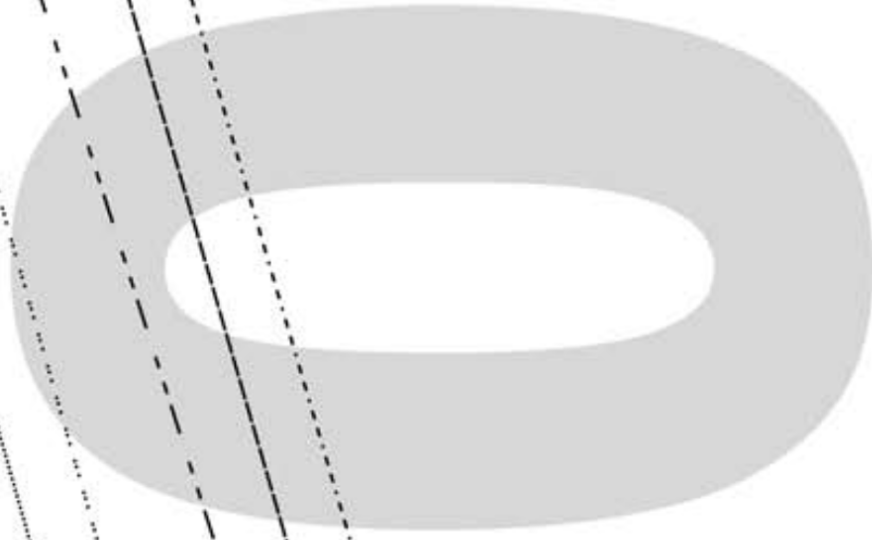
OLD



Handy Sol

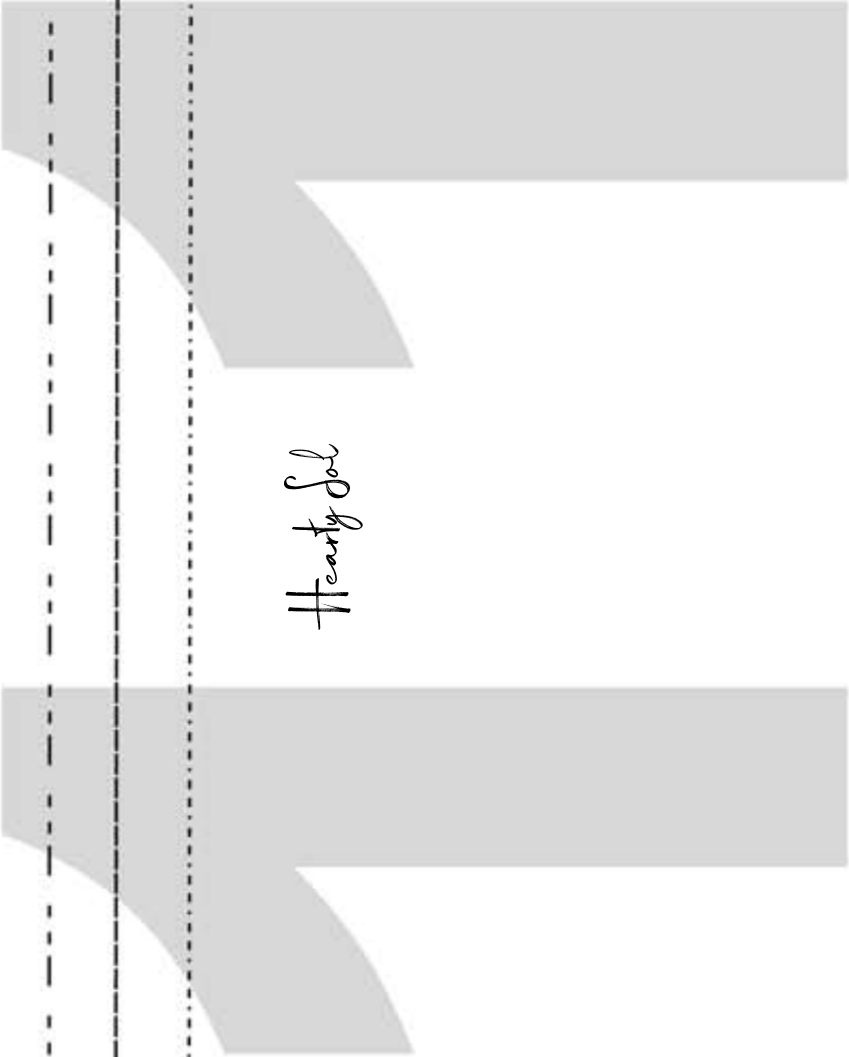
A large, stylized letter 'S' in a light gray color, featuring a heart-shaped cutout in the center. The letter is positioned within a set of horizontal and vertical dashed lines, suggesting a grid or guide for writing or drawing. The text 'Handy Sol' is written in a cursive font above the letter.

Hearty Sol





Handwriting practice lines consisting of a solid top line, a dashed midline, and a solid bottom line, with a dotted line for tracing. The lines are arranged in a series of horizontal rows for practice.



Hearty Sol

